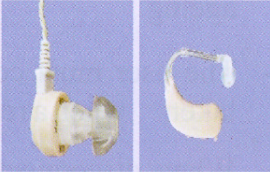
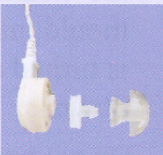
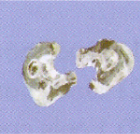


PRECAUTIONS

1. Presence of discharge, wax and any allergic condition should be treated by an ENT specialist prior to wearing of hearing aid and mould.
2. The hearing aid might be supplied with plastic ear tips along with the hearing aid. These may be used temporarily until custom ear moulds are ready. 
3. The ear tips consist of two parts. Both parts of the ear tip should be removed before fixing the custom made ear mould to the hearing aid receiver. 
4. Take care that children do not put mud or sticks into the ear mould for fun.
5. Ear moulds are made for each ear separately since right ear moulds do not fit in left ear and vice-versa. 
6. If the child or the hearing aid user shows any skin reaction after using the mould consult the ENT doctor immediately.

**Have your ears checked regularly by an ENT physician
and your hearing checked regularly by an Audiologist.**

If you have any questions, please contact us immediately.

Phone: 0821-2502000/2502100

TOLL FREE: 18004255218

FAX: 0821-2510515

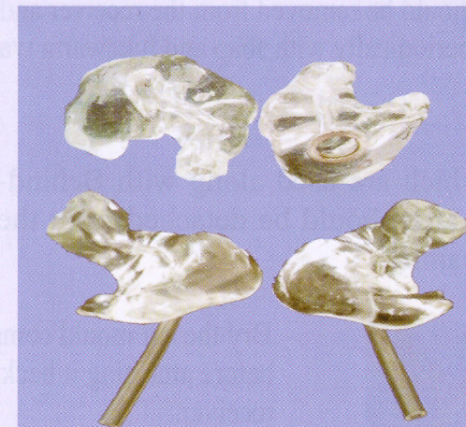
E-mail: director@aiishmysore.in

Website: www.aiishmysore.in

*Developed by: Devi N., Vivek A. & Rajalakshmi R.
Designed by: Devi N.*

DEPARTMENT OF AUDIOLOGY

CARE, MAINTENANCE AND USE OF EAR MOULDS



**ALL INDIA INSTITUTE OF SPEECH AND HEARING
MANASAGANGOTTHRI, MYSORE – 570 006**

CARE, MAINTENANCE AND USE OF EAR MOULDS

The Ear mould is a plastic or Silicone insertion designed to conduct the amplified sound from the hearing aid receiver into the ear canal and to the tympanic membrane.



CARE FOR EAR MOULDS

Care should be taken to guard the ear moulds against the following:

- Loss, breakage, heat, pests and chemicals.



- Should be removed from the receiver and cleaned periodically with soap and lukewarm water.

- The moulds which are used along with Behind-the-Ear hearing aids should be detached from the ear hook for cleaning.



- Dry the ear mould completely before attaching it back to the receiver.

- The mould should not be removed very often from the receiver as the spring loses its tension, however, detach and remove the receiver before washing the ear mould.



- The passage of the ear mould canal should be kept free of dirt, ear wax etc. Such a blockage will cause an unpleasant sound from hearing aid.

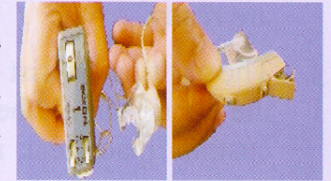
- A new set of ear molds should be made as and when the old ones become loose as, in the case of children.



- A remake of ear mould may be necessary even for Geriatric cases as there may be wrinkles and shrinkage in the ear due to ageing.

- The user must come in person and have his ear impression taken when a remake is necessary.

- When disconnecting and connecting the hearing aid receiver to the ear mould, make sure that the hearing aid is turned off and the volume is turned down.



- Do not press the mould hard over the receiver as it can damage the receiver.

A well fitting Ear Mould:

- 1) Does not need a piece of paper or cotton to fit securely.
- 2) Does not produce a squeal due to acoustic feedback.
- 3) Feels comfortable to the wearer.
- 4) Does not interfere with normal facial movements.



An ill fitting ear mould can cause:

- 1) Falling of the receiver.
- 2) Improper conduction of sound into the ear.
- 3) Unpleasant squeal.
- 4) Discomfort.
- 5) Abrasion due to misfit causing ulceration in the ear canal.



Thus, an ear mould is an important accessory to a hearing aid. It is essential that the ear mould be custom made in order to reap maximum benefit from its use.